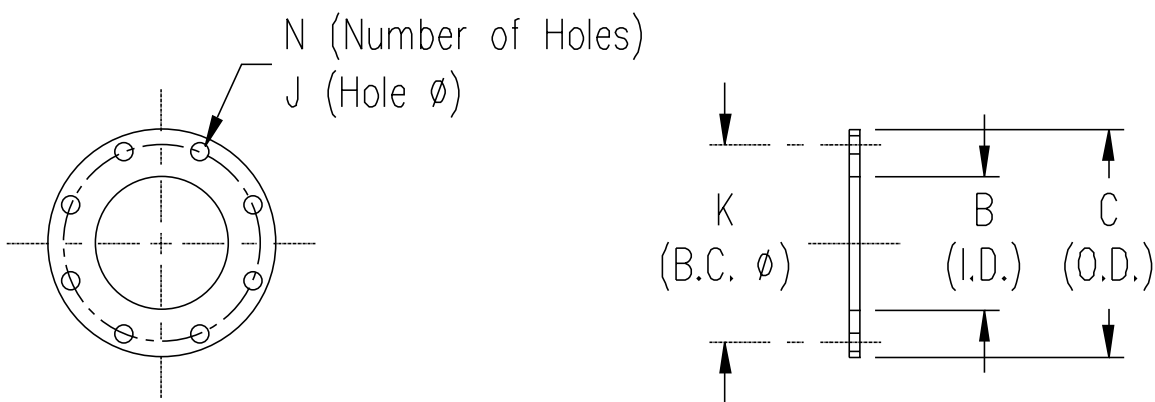


ACCESSORIES



NOTES:

- 1) Standard plate and companion flanges of special design are available upon request.
- 2) Standard plate flanges are welded in place unless otherwise specified.
- 3) Companion flanges are shipped loose unless otherwise specified.

DIMENSIONS AND WEIGHTS

SIZE	REFERENCE	B (I.D.)	C (O.D.)	K (B.C.)	HOLES		WEIGHT
					N	J	
1	M150-A00010	1 3/8	4 1/4	3 1/8	4	5/8	1.2
1 1/4	M150-A00012	1 23/32	4 5/8	3 1/2	4	5/8	1.4
1 1/2	M150-A00015	1 31/32	5	3 7/8	4	5/8	1.6
2	M150-A00020	2 7/16	6	4 3/4	4	3/4	2.3
2 1/2	M150-A00025	2 15/16	7	5 1/2	4	3/4	3.2
3	M150-A00030	3 9/16	7 1/2	6	4	3/4	3.5
3 1/2	M150-A00035	4 1/16	8 1/2	7	8	3/4	4.3
4	M150-A00040	4 5/8	9	7 1/2	8	3/4	6.1
5	M150-A00050	5 11/16	10	8 1/2	8	7/8	6.9
6	M150-A00060	6 3/4	11	9 1/2	8	7/8	7.7
8	M150-A00080	8 3/4	13 1/2	11 3/4	8	7/8	11.1
10	M150-A00100	10 7/8	16	14 1/4	12	1	17.5
12	M150-A00120	12 7/8	19	17	12	1	25.5
14	M150-A00140	14 3/16	21	18 3/4	12	1 1/8	31.3
16	M150-A00160	16 3/16	23 1/2	21 1/4	16	1 1/8	37.6
18	M150-A00180	18 3/16	25	22 3/4	16	1 1/4	37.5
20	M150-A00200	20 3/16	27 1/2	25	20	1 1/4	53.0
22	M150-A00220	22 3/16	29 1/2	27 1/4	20	1 3/8	56.8
24	M150-A00240	24 3/16	32	29 1/2	20	1 3/8	67.0
26	M150-A00260	26 3/16	34 1/4	31 3/4	24	1 3/8	73.8
28	M150-A00280	28 3/16	36 1/2	34	28	1 3/8	81.0
30	M150-A00300	30 3/16	38 3/4	36	28	1 3/8	89.8